

FISHWAY STATUS REPORT

Date: 9/26/2011

Inspection Period: 9/18 - 9/24/2011

THE DALLES DAM



**US Army Corps
of Engineers**
Portland District

The Dalles Project-Fisheries
P.O. Box 564
The Dalles, OR 97058-9998
Phone: 541-506-3800

Fishways are inspected twice daily. Additional daily monitoring done via automation system in fisheries office.

The Dalles Dam	Inspections	Criteria	Total Number of Inspections:	21	Temperature:	67.9	F
	Out of Criteria	Limit	Comments	Secchi:	5.6	Ft.	
NORTH FISHWAY							
Exit differential	0	≤ 0.5'					
Count station differential	0	≤ 0.3'	Window cleaned 9/19 and 9/22.				
Weir crest depth	0	1.0' ± 0.1'					
Entrance differential	0	1.0' - 2.0'	Average 1.3	Daily differentials & weir depths, see AVGS tab.			
Entrance weir N1	0	depth (≥ 8')	Average 9.6				
Entrance weir N2		Closed	Bulkhead installed.				
PUD Intake differential	0	≤ 0.5'					
EAST FISHWAY							
Exit differential	0	≤ 0.5'					
Removable weirs 154-157	0	Per forebay	Auto adjusts 1' increments.				
Weir 158-159 differential	0	1.0' ± 0.1'					
Count station differential	0	≤ 0.3'	Window cleaned 9/19 and 9/22; picket leads raked 9/19, 9/22, 9/23.				
Weir crest depth	0	1.0' ± 0.1'					
Junction pool weir JP6	0	depth (≥ 7')	Manually adjusted as needed.				
East entrance differential	0	1.0' - 2.0'	Average 1.6	Daily differentials & weir depths, see AVGS tab.			
Entrance weir E1	0	No criteria	Average 4.5	Manually adjusted.			
Entrance weir E2	0	depth (≥ 8')	Average 11.5				
Entrance weir E3	0	depth (≥ 8')	Average 11.5				
Collection channel velocity	0	1.5 - 4 fps	Average 2.4	See Velocities tab for more complete information.			
West entrance differential	0	1.0' - 2.0'	Average 1.4				
Entrance weir W1	1	depth (≥ 8')	Average 8.7	Out of criteria at 7.6'; manually adjusted.			
Entrance weir W2	1	depth (≥ 8')	Average 8.7	Out of criteria at 7.5'; manually adjusted.			
Entrance weir W3	0	No criteria	Average Closed				
South entrance differential	0	1.0' - 2.0'	Average 1.3	Daily differentials & weir depths, see AVGS tab.			
Entrance weir S1	0	depth (≥ 8')	Average 8.3				
Entrance weir S2	0	depth (≥ 8')	Average 8.3				
JUVENILE PASSAGE							
Sluice gate operation	0	units 1,8,18	Main Unit 18 RTS 9/23; sluice gates 16-2, 16-3 closed, 18-2 and 18-3 opened.				
Turbine trash rack drawdown	0	<1.5', wkly	Range: 0.1' - 0.4'				
Spill volume	0	40%, 24hr	Average: On seal				
Spill Pattern	0	per FPP					
Turbine Unit Priority	0	per FPP					
Turbine 1% Efficiency	0	per FPP					

OTHER ISSUES:**THE DALLES****Birds:**

A small number of gulls have been observed around the project. The cormorants are mainly roosting on north forebay towers. Hazing has ended for and season and see the **Avian Distribution** tab below for species, number, and location information.

Pikeminnow:

The Columbia River Northern Pikeminnow Management Program Dam Angling and Site-Specific Fishery: The program has been extended to the end of September.

Operations:

Gateway drawdown was completed on 9/19. Differentials ranged between 0.1' - 0.4' , all within criteria.

Calibration completed 9/21. All entrance weirs, channels, tailwater, and exit staff gauges in compliance.

The third fishway daily inspections trend taken from the fisheries office SCADA system indicated that all fishway entrances and exits remained in criteria during the absence of fisheries personnel from 1700 hrs. to 0630 hrs.

Maintenance:

Powerhouse roof repair completed 9/23. Line 6 and Main Unit 18 returned to service. Sluice gate operation: 16-2, 16-3 closed, 18-2 and 18-3 opened as per Fish Passage Plan (FPP).

Due to low tailwater (75.1' - 76.5') Fisheries are unable to maintain a 7' depth for water over weir JP6. Currently the weir has been completely raised out of the junction pool to achieve criteria.

A multibeam hydrographic survey of The Dalles Dam stilling basing is scheduled for 9/27 to 9/28. This will be a three day effort to set up equipment on the spillway deck downstream end of the Westrick park near bay 23, and the actual survey. The survey will be accomplished without interruption to auxiliary water system (AWS) flow to the south and north fish entrances. There will be an option to have the Peoples Utility District (PUD) shut down their AWS to the north entrance for a short time (~ 0.5 hour) if flow velocity is a problem. Previously coordinated through FPOM.

There will be a dive survey of both sides of the 8/9 spill wall on 10/6 - 7.

Site visit for The Dalles east fish ladder exit weir replacement 9/22. Projects team is putting a contract together to replace weirs as money becomes available. Plans and specifications should be completed by the end of September.

Pacific Northwest National Laboratory (PNNL) is scheduled 9/27 to inspect all trolley pipes on each pier of the spillway forebay to start preparing for repairs and replacement of the trolley pipes that were lost or damaged during this spring. Portland will be contracting divers to replace the missing pipes and properly secure the other pipes sometime this winter. In order to determine the condition of the pipes on the piers, PNNL will use a work boat with personnel on board and boat up to each pipe and inspect the attachments for issues. The work is expected to take ~ 4hrs. to complete.

Studies:

The Inland Bird Predation Work Group scheduled to meet 10/25 at Westrick.

East fish way backup water supply study support continues. Project engineering is planning scope of work for dewatering fish lock channels, cleaning supply piping and testing the amount of water that can be provided by the fish lock system. Three stop logs were removed from the fishlock cul-de-sac channel and will receive new seals next FY. Study team to meet with HDR for The Dalles site visit first week of October.

Research:

Oregon Department of Fish and Wildlife Bass Angling Project: The seasons program concluded 8/31.

U.S. Fish and Wildlife and Columbia River Inter-Tribal Fish Commission (CRITFC) continue to download camera DVR's of lamprey passage between count station picket leads. Monitoring to occur from 6/1 to 10/30.

Approved by;
Ron D. Twiner
Operation Project Manager
The Dalles Dam

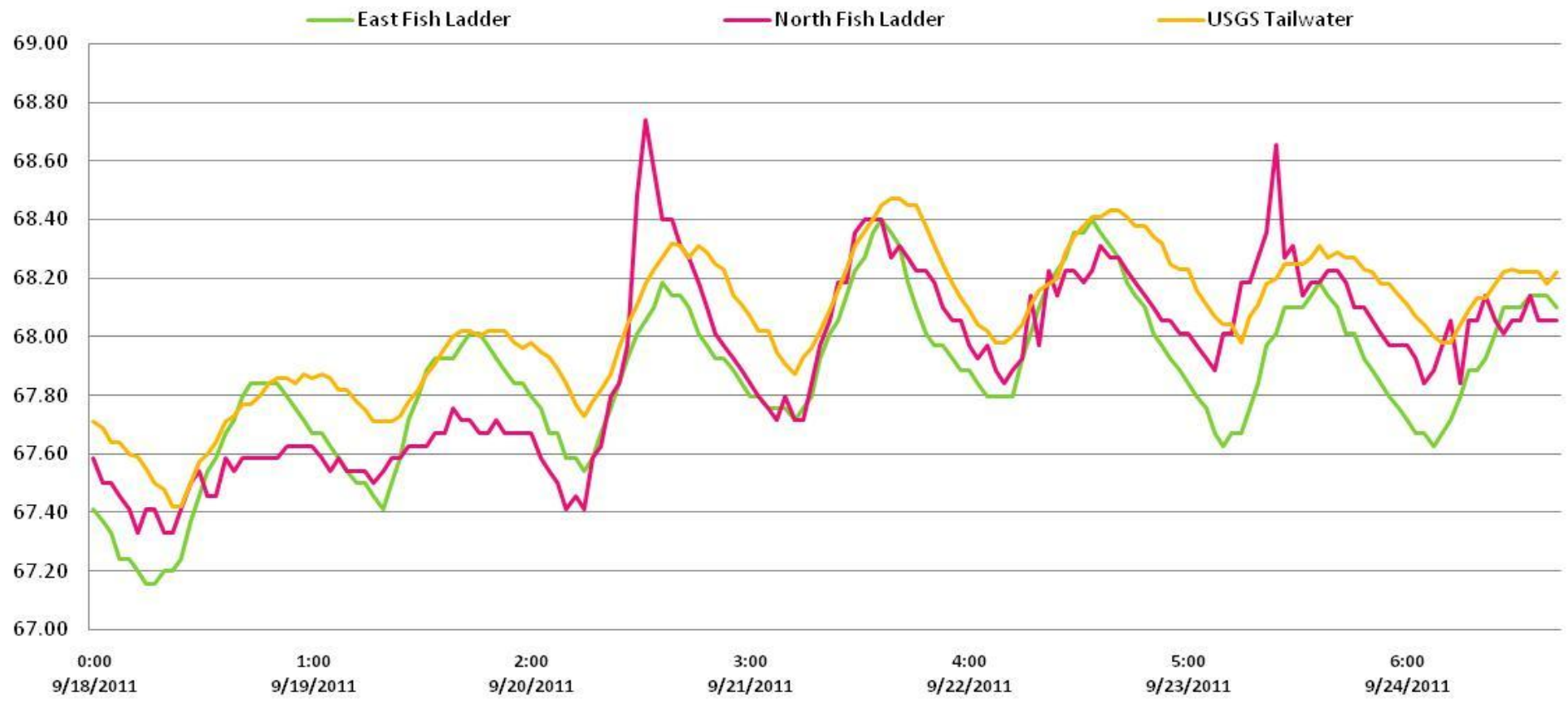
The Dalles Dam Fish Counts

Date	East	North	East	North	Total	Total	East	North					East	North					Spill	
	Chinook	Chinook	Chinook	Chinook	East	North	Unclipped	Unclipped	East	North	East	North	Coho	Coho	East	North	East	North	Spill	
	Adult	Adult	Jack	Jack	Sthd	Sthd	Sthd	Sthd	Sock	Sock	Coho	Coho	Jack	Jack	Lamprey	Lamprey	Pink	Pink	Volume	
18-Sep	6026	502	1954	125	3211	454	719	96	0	0	1692	262	64	12	6	6	31	7	O N S E A L	
19-Sep	7434	379	2087	149	2963	273	684	70	0	0	1894	252	92	16	13	0	31	8		
20-Sep	5832	332	1890	113	2525	181	587	48	0	0	2020	346	85	17	7	8	47	0		
21-Sep	5802	214	2568	182	2668	186	640	49	0	0	2896	668	146	37	10	7	30	10		
22-Sep	3752	240	1964	179	2314	186	516	56	0	0	2068	301	61	16	8	2	65	7		
23-Sep																				
24-Sep	4334	202	2054	85	2253	158	479	44	0	0	1198	140	71	12	7	11	53	1		
Wkly Tot	33180	1869	12517	833	15934	1438	3625	363	0	0	11768	1969	519	110	51	34	257	33		
% Split	94.7%	5.3%	93.8%	6.2%	91.7%	8.3%	90.9%	9.1%	0.0%	#DIV/0!	85.7%	14.3%	82.5%	17.5%	60.0%	40.0%	88.6%	11.4%		

Spill range: On seal.

Axis Title

The Dalles River/Water Temperatures



The Dalles Dam Maximum Daily Bird Observations

Washington Shore

SW-T1: One cormorant resting on water.

SW-T3: One to four gulls resting on rocks; nine to 16 cormorants' (ten active).

SW-T4: Two gulls resting on rocks.

FB1: Seven to 88 cormorants roosting on electrical towers on Washington side; four gulls resting on water. 16 gulls resting on water.

SW-T2: Nine cormorants fly by; one cormorant active.

PH-T1: Three to 26 cormorants resting on rocks and resting on water.

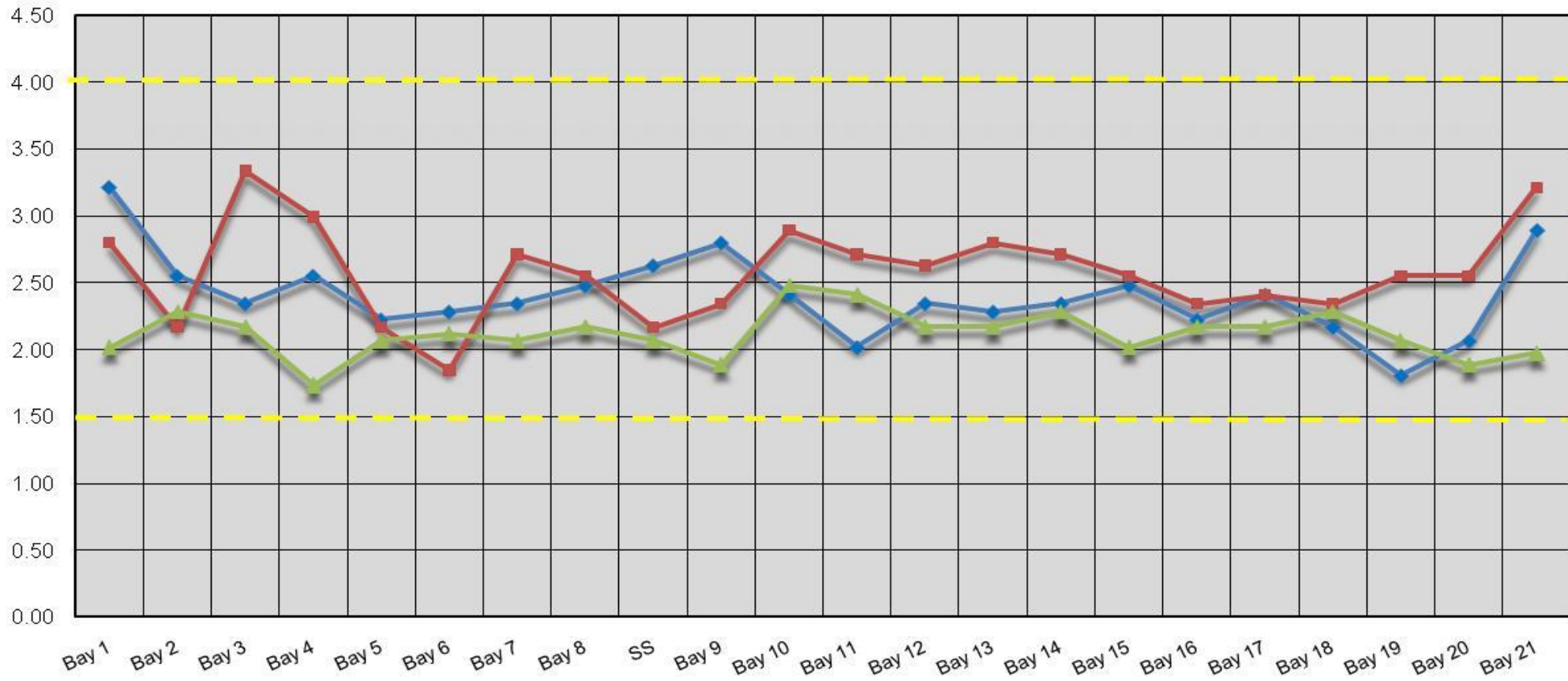
PH-T2: One cormorant active.

PH-T3: Nine to 16 cormorants resting on rocks.

Oregon Shore

The Dalles Dam Collection Channel Velocities (fps)

9/22/2011 9/23/2011 9/24/2011



	Temp:		Secchi:
	67.5	SUN	5.0
	67.7	MON	5.0
	67.9	TUES	6.0
	68.0	WED	6.0
	68.1	THUR	6.0
	68.0	FRI	5.5
	68.0	SAT	6.0
AVG:	67.9	AVG:	5.6

The Dalles Dam Daily Readings and Averages for Temperatures, Secchi, Entrances, and Spill

North Fish Ladder			East Fish Ladder												% Spill	
North Entrance		East Entrance						West Entrance				South Entrance				
Date:	Differential	N1 Depth	Differential	E1Depth	E2 Depth	E3 Depth	JP 6	Differential	W1Depth	W2 Depth	W3 Depth	Differential	S1 Depth	S2 Depth		
9/18/2011	1.3	9.5	1.6	4.8	11.4	11.4	10.7	1.4	8.9	9.0		1.4	8.3	8.2	ON SEAL	
9/18/2011	1.4	9.5	1.5	6.2	11.6	11.6	12.2	1.2	10.1	10.1		1.4	8.4	8.3		
9/18/2011			1.6	3.8	11.5	11.4		1.4	8.3	8.4		1.3	8.4	8.2		
9/19/2011	1.4	9.4	1.6	4.3	11.4	11.4	10.2	1.4	8.6	8.7		1.4	8.2	8.2		
9/19/2011	1.4	9.4	1.5	5.3	11.6	11.5	11.3	1.3	8.2	8.3		1.4	8.3	8.3		
9/19/2011			1.6	5.2	11.5	11.5		1.4	8.6	8.6		1.4	8.1	8.1		
9/20/2011	1.3	9.4	1.6	4.3	11.5	11.5	10.2	1.4	8.5	8.5		1.3	8.4	8.4		
9/20/2011	1.3	9.5	1.4	5.1	11.5	11.5	11.1	1.3	9.0	9.1		1.4	8.3	8.4		
9/20/2011			1.6	4.3	11.5	11.5		1.4	8.5	8.6		1.4	8.2	8.2		
9/21/2011	1.4	9.5	1.4	4.5	11.6	11.6	10.4	1.4	8.6	8.7		1.3	8.5	8.4		
9/21/2011	1.4	9.6	1.6	5.6	11.5	11.5	11.6	1.2	9.6	9.6		1.4	8.3	8.4		
9/21/2011			1.7	4.0	11.5	11.5		1.5	8.3	8.4		1.4	8.3	8.2		
9/22/2011	1.2	9.6	1.6	3.5	11.5	11.4	9.4	1.4	8.2	8.3		1.3	8.3	8.3		
9/22/2011	1.2	9.8	1.7	4.8	11.4	11.5	10.8	1.3	8.9	9.0		1.4	8.4	8.3		
9/22/2011			1.4	3.6	11.5	11.5		1.4	8.2	8.2		1.4	8.2	8.4		
9/23/2011	1.2	9.7	1.6	4.3	11.6	11.5	10.2	1.5	8.4	8.5		1.3	8.4	8.4		
9/23/2011	1.3	9.5	1.6	5.5	11.6	11.6	11.5	1.3	9.5	9.6		1.5	8.3	8.2		
9/23/2011			1.6	4.3	11.6	11.5		1.4	8.5	8.6		1.3	8.4	8.3		
9/24/2011	1.2	9.6	1.4	3.6	11.6	11.6	9.6	1.6	7.6	7.5		1.4	8.1	8.0		
9/24/2011	1.2	9.7	1.7	3.8	11.4	11.4	9.8	1.1	9.0	8.9		1.3	8.2	8.1		
9/24/2011			1.6	3.7	11.5	11.5		1.2	9.0	8.8		1.3	8.1	8.2		
AVG:	1.3	9.6	1.6	4.5	11.5	11.5	10.6	1.4	8.7	8.7	Closed	1.4	8.3	8.3		
Third fish way inspection for east fish ladder, east, west, and south entrances completed via automation system in fisheries office.																